

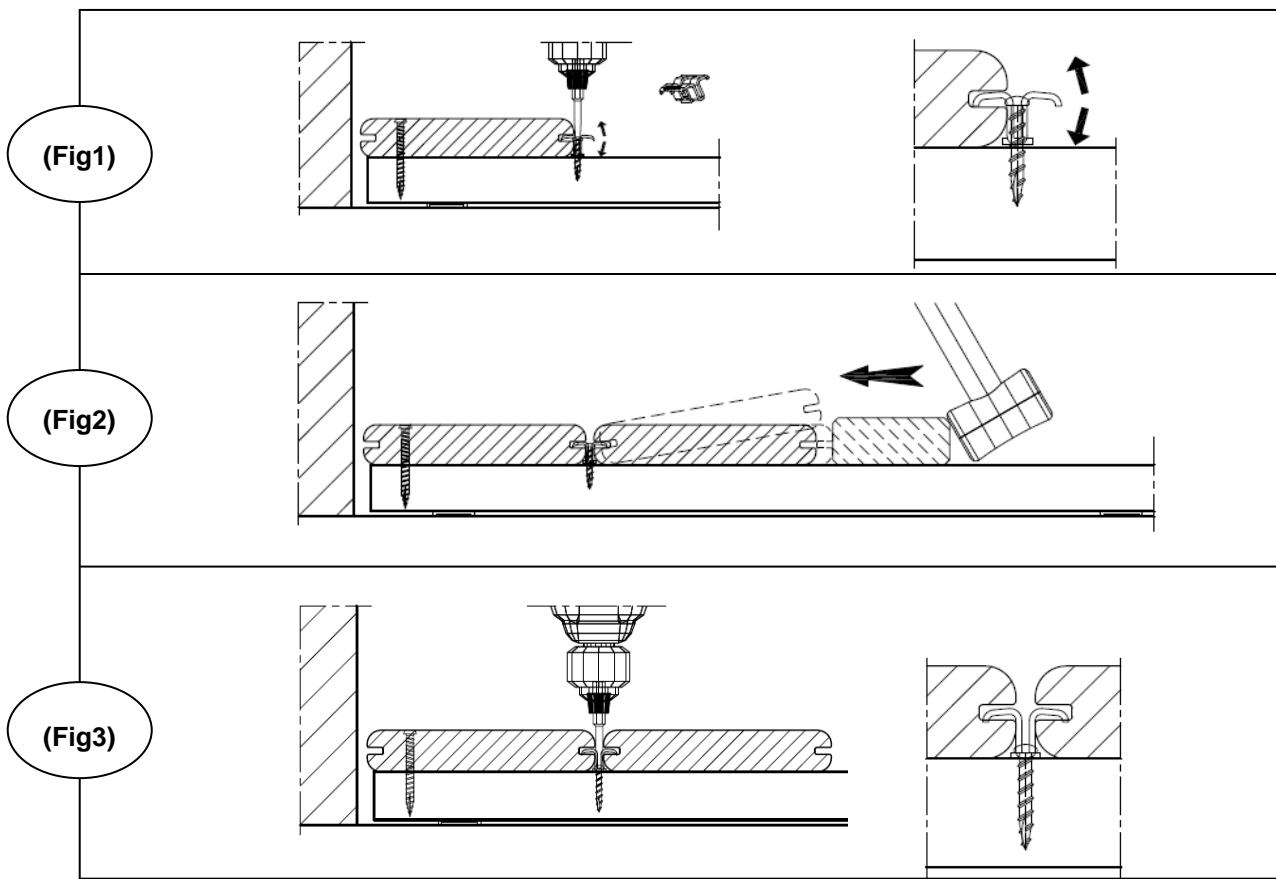


INSTALLATION INSTRUCTIONS

Easy and quick to install, COBRA® fastener is a hidden deck fastener designed specifically to fiberon® decking boards. COBRA® fasteners allow an exceptional hold-down power thanks to the claws located on the tabs. The result is a stable and smooth deck surface.

INITIAL INSTALLATION

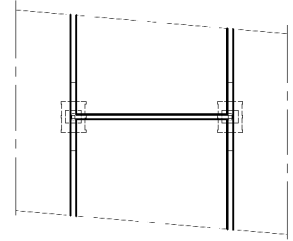
1. Position the first deck board and leave a 6mm gap from any permanent structure.
2. Pre-drill the first deck board with a 3mm drill. Use Fiberdeck® composite decking screws along the outside edge. The screw placement should be at 25mm from the edge and 35mm from the end to prevent cracking of the board. Do not over-tighten the screws.
3. Insert COBRA® fastener into the groove channel of the board at every support joist. Install the screw (provided with the fasteners) and do not over-tighten yet **(Fig1)**
4. Position the next board against the fastener. Slightly lift the outer edge of the board to ease the assembly of the board onto the fastener **(Fig2)**
5. Tighten the COBRA® screws down. A special bit is provided **(Fig3)**
6. Continue the same procedure till the deck is finished. Adjust the final board and fix it with Fiberdeck® composite decking screw.
7. To obtain a fascia, you can cut a board in the length direction and place it alongside your deck.



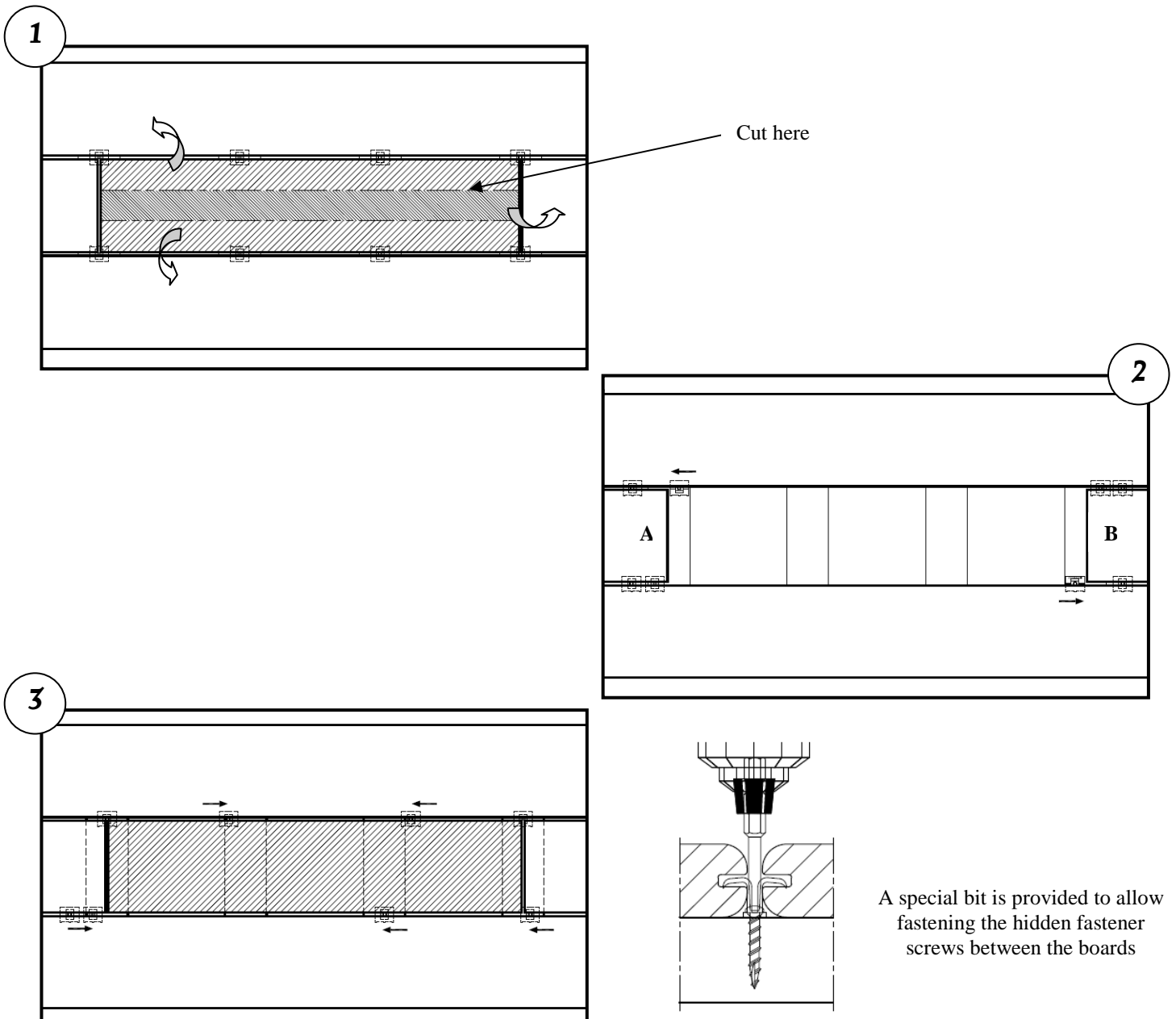
DECK BOARD REPLACEMENT

COBRA® fasteners could fix two boards end-to-end.

This allows an easy board replacement without altering the rest of the deck.



1. Make two parallel cuts down the center of the board to be replaced. Remove the center section from the board and the remaining two pieces attached to the fasteners.
2. Unscrew the fastener used to attach the damaged board. Slide the COBRA® fasteners into the side channel of boards A and B.
3. Position the new board and slide the COBRA® fasteners back in the side channel of the new board. Make sure that all COBRA® fasteners are on the joists and then tighten the screws down. A special bit is provided.



A special bit is provided to allow fastening the hidden fastener screws between the boards